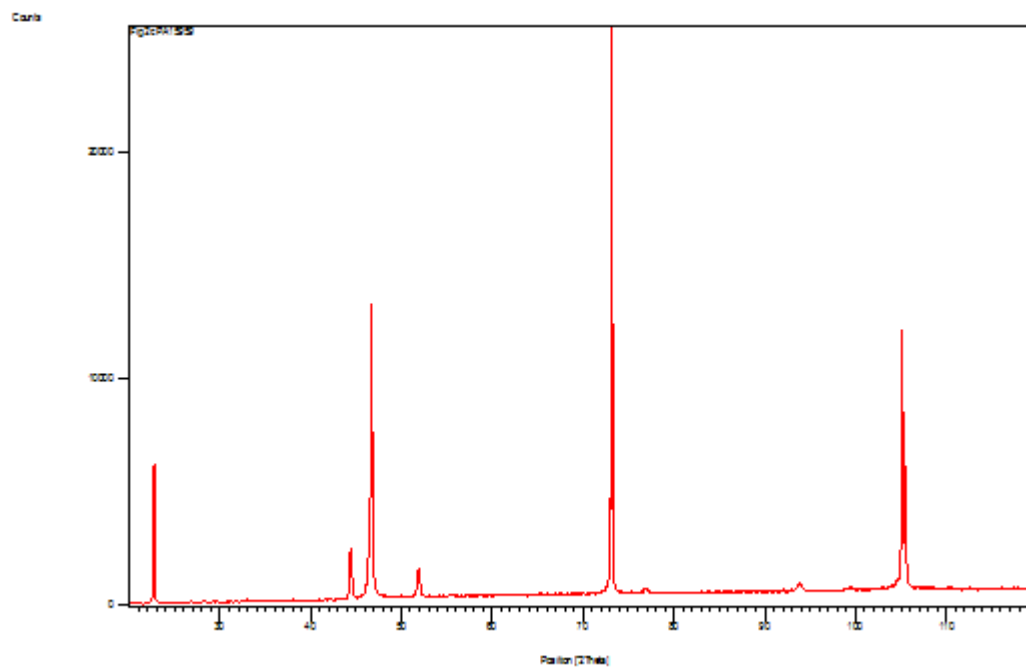


Anchor Scan Parameters

Dataset Name:	Fig 2c PA15959
File name:	H:\SCHLAGEL\NaAu2\CG of NaAu2 paper\Figures\Fig 2c PA15959.xrdml
Sample Identification:	DLS-9-110
Comment:	DLS-9-110 NaAu2 Repolished Configuration=Stage Flat Sample, Owner=User-1, Creation date=1/11/2005 2:35:06 PM Goniometer=PW3050/60 (Theta/Theta); Minimum step size 2Theta:0.001; Minimum step size Omega:0.001 Sample stage=PW3071/xx Bracket Diffractometer system=XPERT-PRO Measurement program= flat-xcelerator-NO MONO, Owner=User-1, Creation date=10/3/2007 11:19:16 AM
Measurement Date / Time:	6/25/2014 3:20:28 PM
Operator:	user-1
Raw Data Origin:	XRD measurement (*.XRDML)
Scan Axis:	Gonio
Start Position [°2Th.]:	20.0042
End Position [°2Th.]:	119.9882
Step Size [°2Th.]:	0.0080
Scan Step Time [s]:	622.0076
Scan Type:	Continuous
PSD Mode:	Scanning
PSD Length [°2Th.]:	2.12
Offset [°2Th.]:	0.0000
Divergence Slit Type:	Automatic
Irradiated Length [mm]:	0.50
Specimen Length [mm]:	10.00
Measurement Temperature [°C]:	25.00
Anode Material:	Co
K-Alpha1 [Å]:	1.78901
K-Alpha2 [Å]:	1.79290
K-Beta [Å]:	1.62083
K-A2 / K-A1 Ratio:	0.50000
Generator Settings:	40 mA, 45 kV
Diffractometer Type:	0000000000030809
Diffractometer Number:	0
Goniometer Radius [mm]:	240.00
Dist. Focus-Diverg. Slit [mm]:	100.00
Incident Beam Monochromator:	No
Spinning:	No

Graphics



Document History

Insert Measurement:

- File name = "Fig 2c PA15959.xrdml"
- Modification time = "12/18/2018 9:30:18 AM"
- Modification editor = "schlagel"

Default properties:

- Measurement step axis = "None"
- Internal wavelengths used from anode material: Cobalt (Co)
- Original K-Alpha1 wavelength = "1.78901"
- Used K-Alpha1 wavelength = "1.78901"
- Original K-Alpha2 wavelength = "1.79290"
- Used K-Alpha2 wavelength = "1.79290"
- Original K-Beta wavelength = "1.62083"
- Used K-Beta wavelength = "1.62083"
- Incident beam monochromator = "No"
- Fixed div. slit size = "1.00000"
- Spinner used = "No"
- Receiving slit size = "0.10000"
- Step axis value = "0.00000"
- Offset = "0.00000"
- Sample length = "10.00000"
- Modification time = "12/18/2018 9:30:18 AM"
- Modification editor = "schlagel"

Interpolate Step Size:

- Step Size = "Derived"
- Modification time = "11/1/2004"
- Modification editor = "PANalytical"